



Naval Weapons Systems Training Facility Boardman Environmental Impact Statement

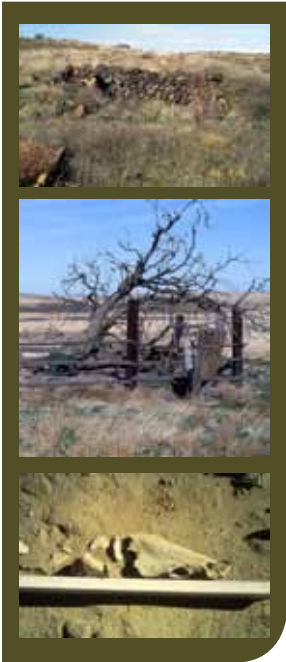
Protecting Cultural Resources

Naval Weapons Systems Training Facility (NWSTF) Boardman is a military training area that provides distinctive conditions and an ideal setting for U.S. service men and women to conduct essential training activities for preparation before deployment. This area also contains various prehistoric and historic cultural resources. The U.S. Navy and Oregon National Guard must protect these sensitive resources while conducting military training activities.

HISTORY OF NWSTF BOARDMAN

On Jan. 23, 1941, the President issued Executive Order 8651, whereby the area now encompassing Boardman was withdrawn from public lands to be used for aerial bombing and gunnery ranges by the War Department. Subsequently, the U.S. Army Air Corps acquired the land in Morrow County at what is now NWSTF Boardman for that purpose. Ownership was transferred to the Navy in 1958. Military aircraft regularly used NWSTF Boardman for aerial bombing until 1996. Infrequent bombing practice continues today, as does aerial gunnery training by the Navy and the Oregon National Guard.

Present-day NWSTF Boardman consists of more than 47,000 acres used by the Navy, Oregon National Guard and other federal, state and local agencies to meet their training and testing requirements.



As responsible environmental stewards, the U.S. Navy and Oregon National Guard are aware that military training activities may have an effect on cultural resources and comply with all applicable laws, regulations and policies, such as:

- National Historic Preservation Act
- Archaeological Resources Protection Act
- Native American Graves Protection and Repatriation Act
- Commander, Navy Region Northwest Policy and Instruction for Consultation with Federally-Recognized Native American and Alaskan Natives
- Department of Defense Instruction 4715.16: Cultural Resources Management
- Executive Orders (EO) and Memorandums:
 - ▶ EO 13007 – Indian Sacred Sites
 - ▶ EO 13175 – Consultation and Coordination with Indian Tribal Governments
 - ▶ Memorandum for Heads of Executive Departments and Agencies: Government-to-Government Relations with Native American Tribal Governments

CULTURAL RESOURCE MANAGEMENT PLANS AND SURVEYS

The Navy has prepared various cultural resource management plans to protect and manage the cultural resources at NWSTF Boardman, including:

- Historic and Archaeological Resources Protection Plan
- Archaeological Resources Assessment and Protection Plan for Naval Air Station Whidbey Island

Cultural Resource Investigations

Eight cultural resource investigations have been conducted within the current boundaries of NWSTF Boardman, including six archaeological surveys, one architectural survey and one preliminary National Register of Historic Places (NRHP) evaluation. Approximately 3,560 acres of NWSTF Boardman have been surveyed for archaeological sites. Five prehistoric archaeological sites and 12 historic archaeological sites and/or features have been recorded on NWSTF Boardman. Additionally, 14 artifacts that represent evidence of Native American seasonal hunting or travel camps, inadvertent loss during travel or hunting/gathering activities, and food- and indulgence-related objects have been recorded.

National Register of Historic Places Listings

Fifteen buildings and structures have been surveyed and determinations made for NRHP eligibility by the Navy and concurred by the Oregon State Historic Preservation Office. No buildings or structures at NWSTF Boardman are currently listed or have been determined eligible for listing in the National Register. The Well Spring Segment of the Oregon Trail was listed in the National Register in 1978. Six archeological sites are considered eligible for listing in the National Register, including the Lower Well Springs Diversion of the Boardman Section of the Oregon Trail and two prehistoric archaeological sites.

Oregon Trail mile marker



The Navy and National Guard's proposed actions would not affect the portions of the Oregon Trail that pass through NWSTF Boardman.

THE OREGON TRAIL

A 10-mile stretch of the Oregon Trail passes through the southern section of NWSTF Boardman. Wagon ruts are still visible on the trail routes through parts of the range, and a pioneer cemetery from the 1840s associated with the trail is located on the southern boundary of NWSTF Boardman.

Archaeological Resource Management Guidelines

The Navy has established guidelines for ongoing management of archaeological resources at NWSTF Boardman, including:

- Maintaining confidentiality regarding the location of the known archaeological resources and providing information only to appropriate personnel.
- Ensuring that construction, maintenance and training activities avoid any ground-disturbing activities, to the maximum extent practicable, on or near the known archaeological sites and archaeologically-sensitive areas.
- Conducting additional archaeological investigations to evaluate adverse effects on the resource during training activities that cannot be relocated.
- Consulting with federally-recognized tribes with ancestral ties prior to ground-disturbing activities or near archaeologically-sensitive areas.
- Training personnel working on site to recognize potential archaeological sites.
- Requiring all personnel working on site to report the discovery of any archaeological resources to the appropriate staff.
- Patrolling known archaeological sites periodically to ensure that the sites have not been illegally disturbed.
- Adhering to established procedures for consulting with federally-recognized tribes with ancestral ties.

INTEGRATED CULTURAL RESOURCES MANAGEMENT PLAN (ICRMP)

An ICRMP is planned for NWSTF Boardman. The goals of the ICRMP will include the following:

- Conduct inventory of all historic resources that are listed in or are eligible for listing in the NRHP.
- Identify areas where prehistoric archaeological resources may be present.
- Identify any planned future Navy and National Guard actions that may affect NRHP resources.
- Recommend measures to avoid effects on NRHP resources from Navy and National Guard actions.
- Propose management guidelines and standard operating procedures that will allow the Navy to manage the NRHP resources appropriately.
- Establish procedures to protect prehistoric archaeological resources.
- Consult with the Oregon State Historic Preservation Office and any other interested parties and accept comments regarding the Navy's proposed management of the NRHP resources.
- Provide a Programmatic Agreement regarding the ongoing maintenance and management of the NRHP resources.

